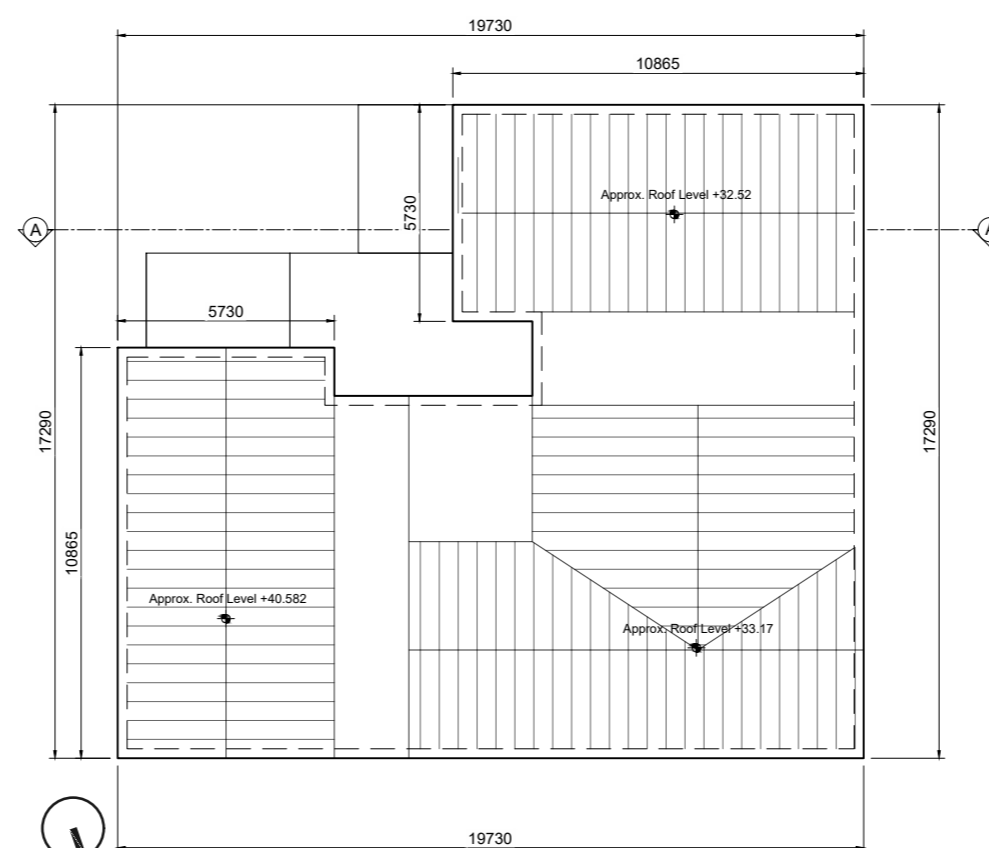


DUPLEX BLOCK C  
SECOND FLOOR PLAN

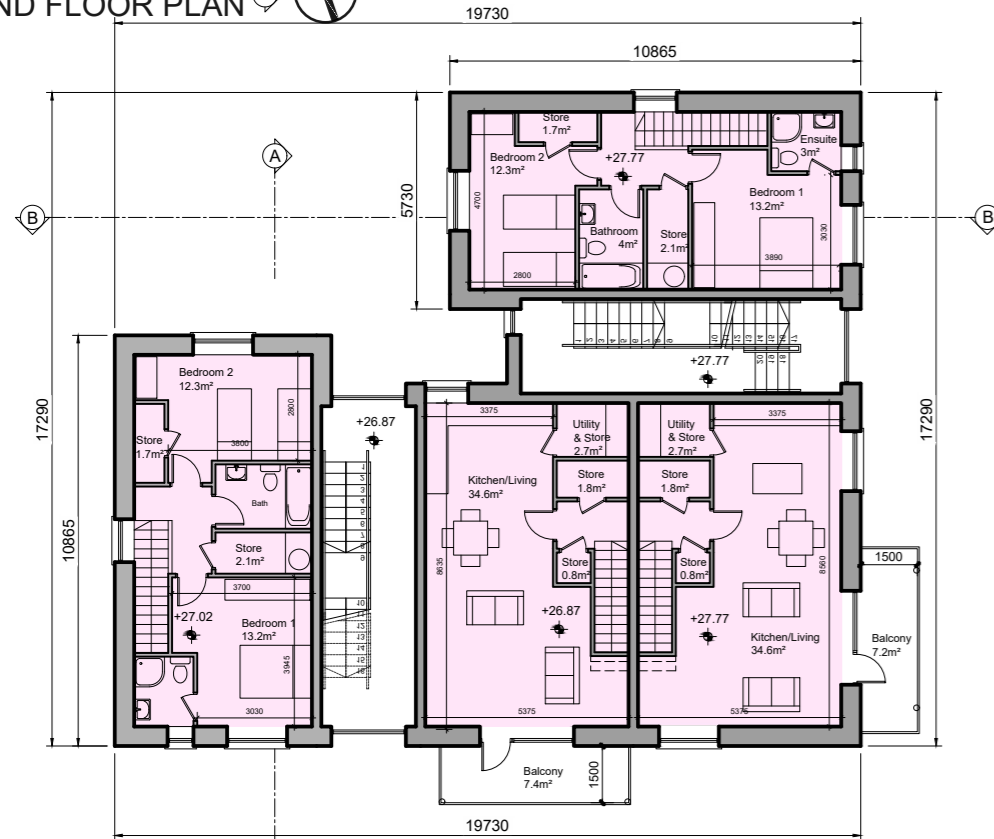


DUPLEX BLOCK C  
ROOF PLAN

**Unit Type**

- 2 Bed Apartment - 4 Person
- 1 Bed Apartment

Dlp. Block	1 Beds	2 Beds	Total Units
C	4	4	8



DUPLEX BLOCK C  
FIRST FLOOR PLAN



DUPLEX BLOCK C  
SOUTH ELEVATION (REAR)



DUPLEX BLOCK C  
WEST ELEVATION (REAR)



DUPLEX BLOCK C  
GROUND FLOOR PLAN



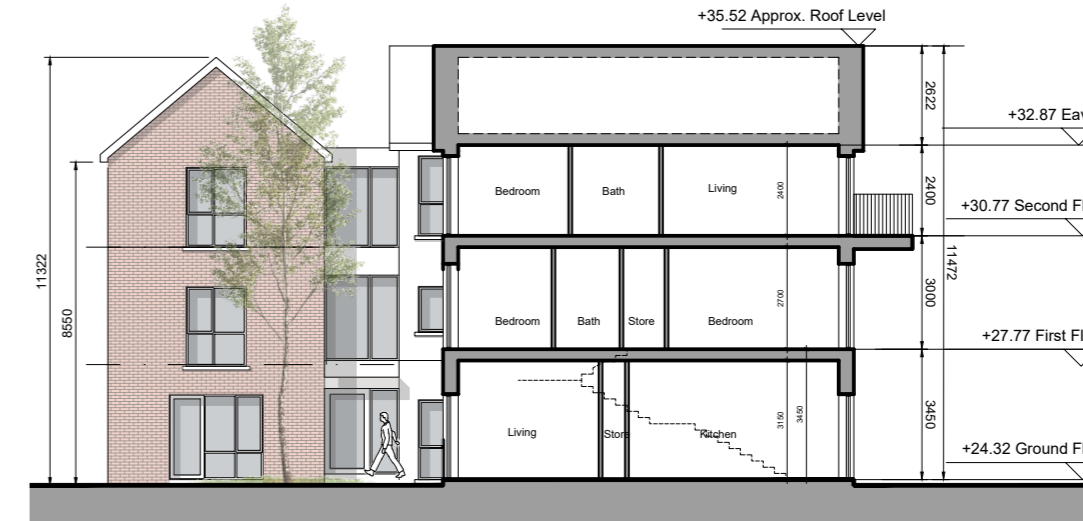
DUPLEX BLOCK C  
NORTH ELEVATION (STREET ELEVATION)



DUPLEX BLOCK C  
EAST ELEVATION (STREET ELEVATION)



DUPLEX BLOCK C  
SECTION A-A



DUPLEX BLOCK C  
SECTION B-B

- This drawing is copyright.
- Do not scale this drawing.
- Errors and omissions to be immediately notified to Architect.
- All dimensions to be checked on site.
- To be read with relevant Engineers drawings.

**Note on Internal Floor Plans**  
All noted room areas are gross.

The proposed areas and aggregate areas comply with *Sustainable Urban Housing: Design Standards for Planning Authorities*. (December 2020)

Where bedroom areas are noted they are exclusive of any built-in storage space.

Storage is generally provided off the hallway or kitchen, and is not provided within a bedroom. Furniture, fittings and fixtures shown on the plans are indicative.

**External Finishes:**

**Roof:**  
Slate or clay/concrete tiles with solar thermal or photovoltaic panels subject to orientation and detailed design

**Walls:**  
Selected facing brick with render where indicated on drawings

**Windows:**  
uPVC or Aluminium framed window system

**Gutters/downpipes:**  
uPVC or aluminium

**Balconies:**  
Projecting: Toughened glazing & stainless steel handrails on precast concrete or metal frame galvanized steel base and guarding/ railing.

**Entrance Canopy:**  
Pressed or standing seam metal on Timber framing

revisions date ins

description	drawing no.
Duplex Block C	1736-SHD-D-3-300
Floor Plans, Roof Plans, Section & Elevations	
job	scale
Development at Oldtown, Swords, Co. Dublin Phase 5	1:200 A2
	date
	MAR '22
	drawn
	PG/LD
	checked
	PG

client  
Gerard Gannon Properties

issue  
Planning SHD Stage 3

CONROY CROWE KELLY  
ARCHITECTS  
65 MERRION SQUARE  
DUBLIN 2

PHONE 6613990/1 FAX 6765715  
E-MAIL info@cck.ie